



**TENNESSEE
WILDLIFE
FEDERATION**

Hickman Leaders Perspectives

Why?

“Need To Know Hickman County’s Current Situation – Opportunities and Constraints”

“Need Solid Information to Make Sound Decisions for Our Future”

“Move from Reactive to Proactive Decision Making for Our Future”

“Know What Hickman County Can Have If We Do this Right”

Background:

Keith Nash, County Commissioner and Planning Commissioner

Jim Bates, Hickman County Mayor

Garry Greer, Centerville Mayor



**TENNESSEE
WILDLIFE
FEDERATION**

**Our Hickman County Team:
Mike Butler – CEO
Dr. Bridget Jones – Land Use Leader
Chris Roberts - Director of Conservation**



**TENNESSEE
WILDLIFE
FEDERATION**

Our Mission:

Leading the conservation, sound management, and wise use of Tennessee's wildlife, waters, and wild places.



**TENNESSEE
WILDLIFE
FEDERATION**

We Can Help Hickman County's
Leaders Identify Your Assets,
Explore Implementation Strategies,
and Utilize Resources and
Partnerships



**TENNESSEE
WILDLIFE
FEDERATION**

**We Can Help Hickman County's
Leaders Create Information for
Future Decision Making and
Investments**

Hickman County's Current Needs and Opportunities

1. Identify - Natural Resource Assets
2. Identify - Rural Economic Development Assets
3. Understand - Current Conditions
4. Understand – Current Constraints
5. Create Consensus - Future Actions
6. Proactive Strategies- Implementation and Incentives
7. Leverage – Strategic Partnerships



**TENNESSEE
WILDLIFE
FEDERATION**

Natural Resources Asset Assessment:

Land Conditions

Wetlands

Flood Plains and Riparian Areas

Wildlife Habitat

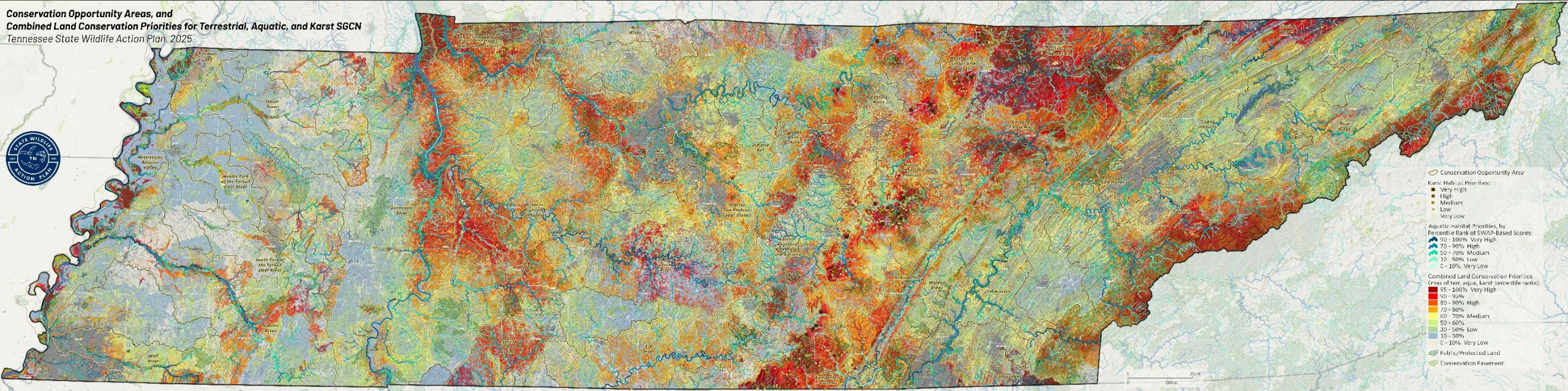
Farmland

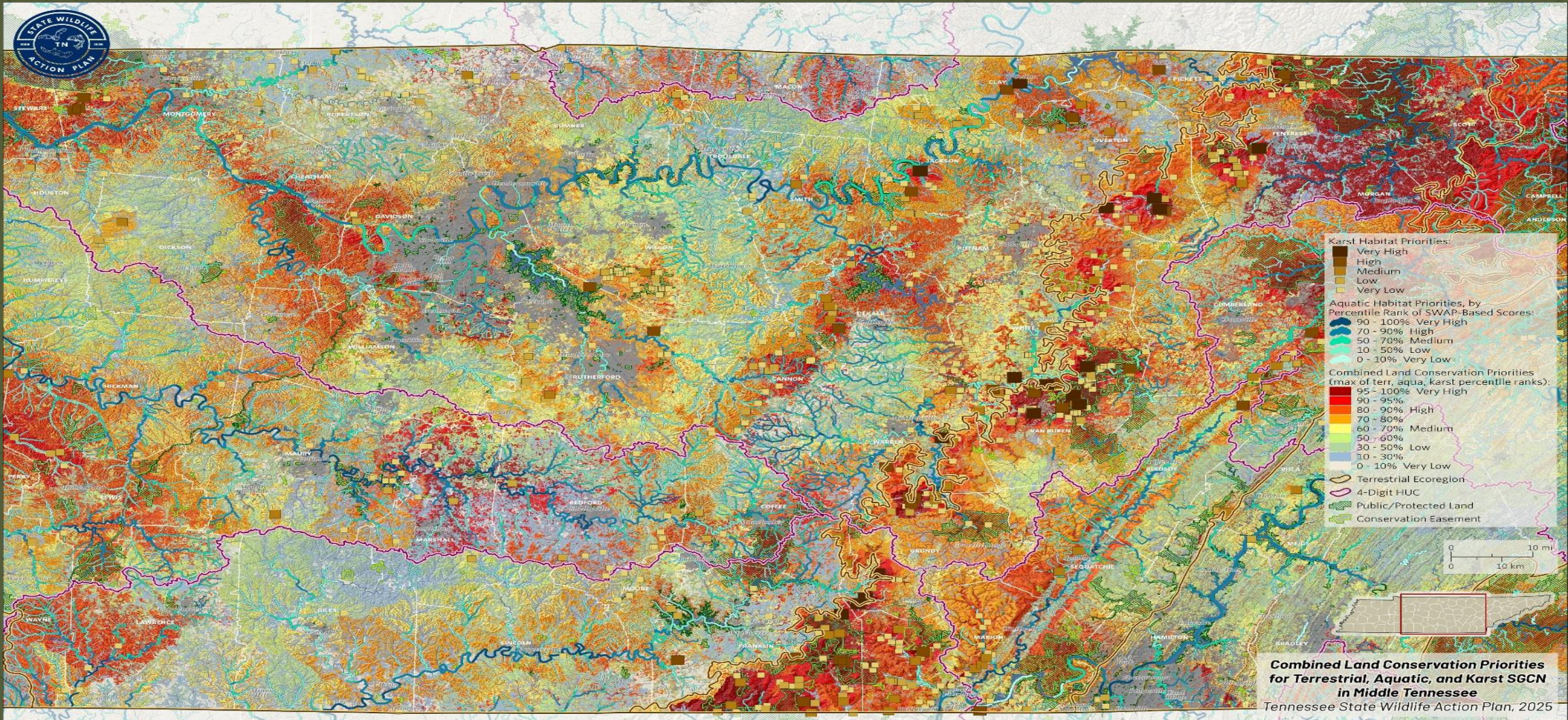
Forests

Grasslands

Outdoor Recreation

Conservation Opportunity Areas, and Combined Land Conservation Priorities for Terrestrial, Aquatic, and Karst SGCN Tennessee State Wildlife Action Plan, 2025





Combined Land Conservation Priorities for Terrestrial, Aquatic, and Karst SGCN in Middle Tennessee
Tennessee State Wildlife Action Plan, 2025



Terrestrial Habitat Priorities in Middle Tennessee
Tennessee State Wildlife Action Plan, 2025



Aquatic Habitat Priorities in Middle Tennessee
Tennessee State Wildlife Action Plan, 2025

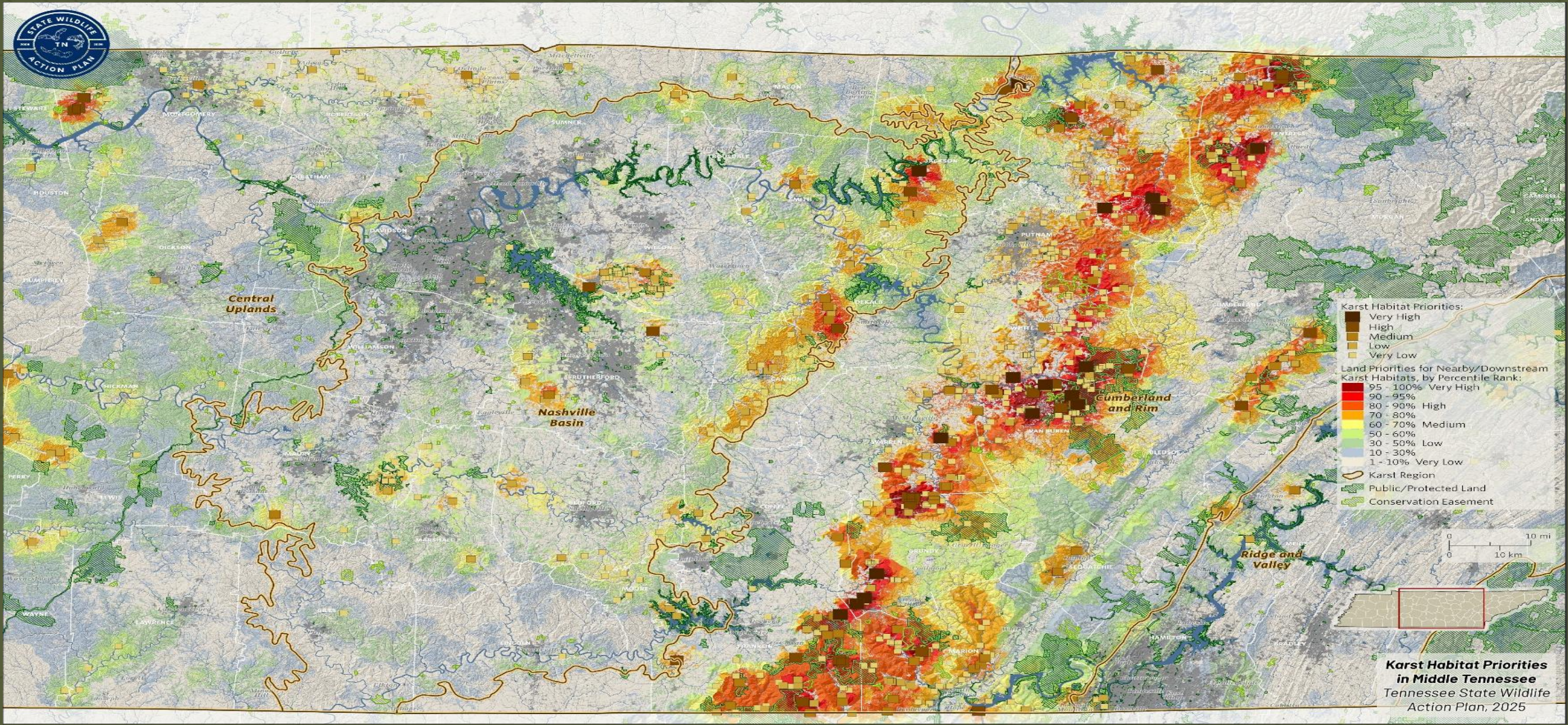
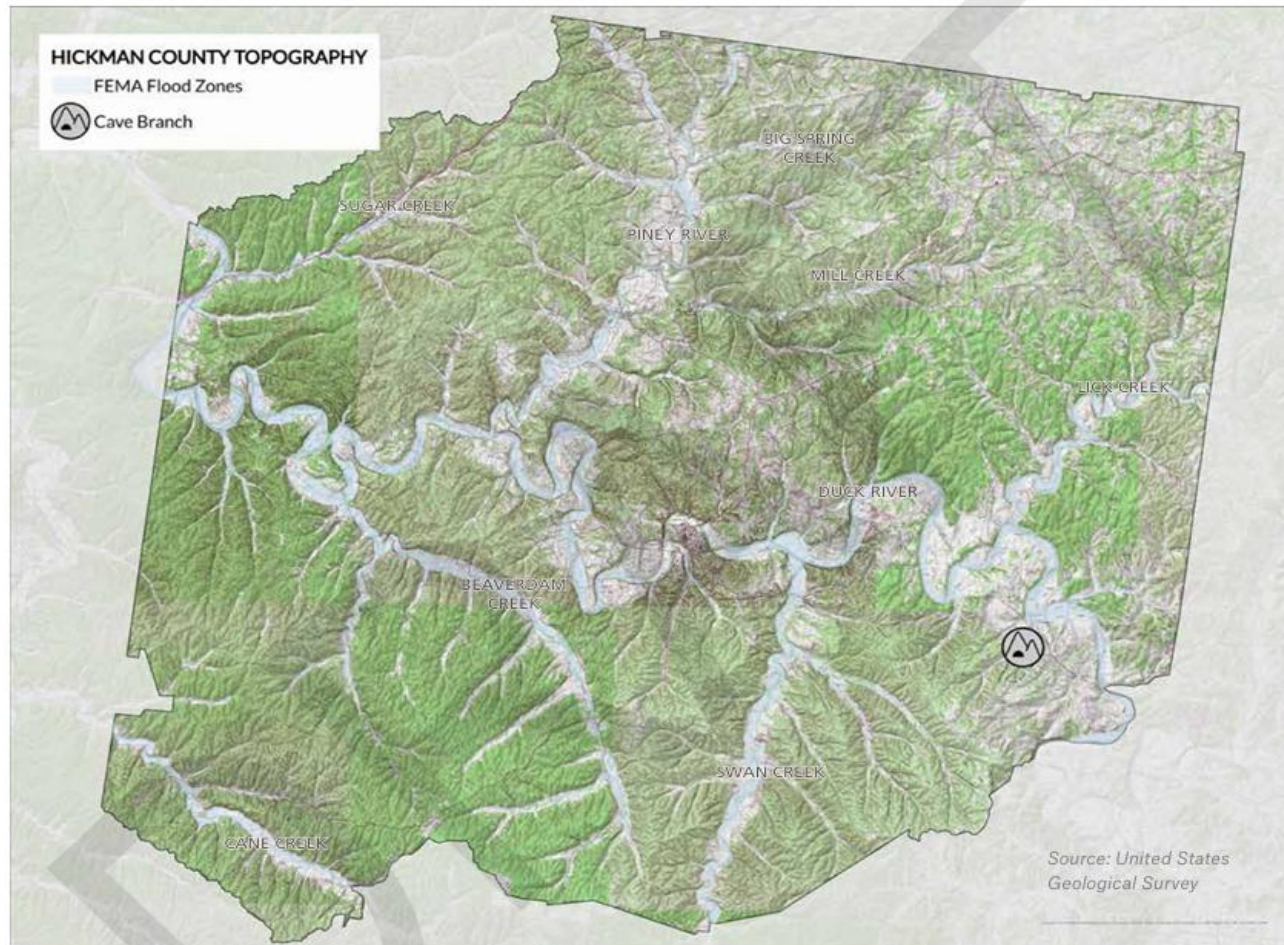
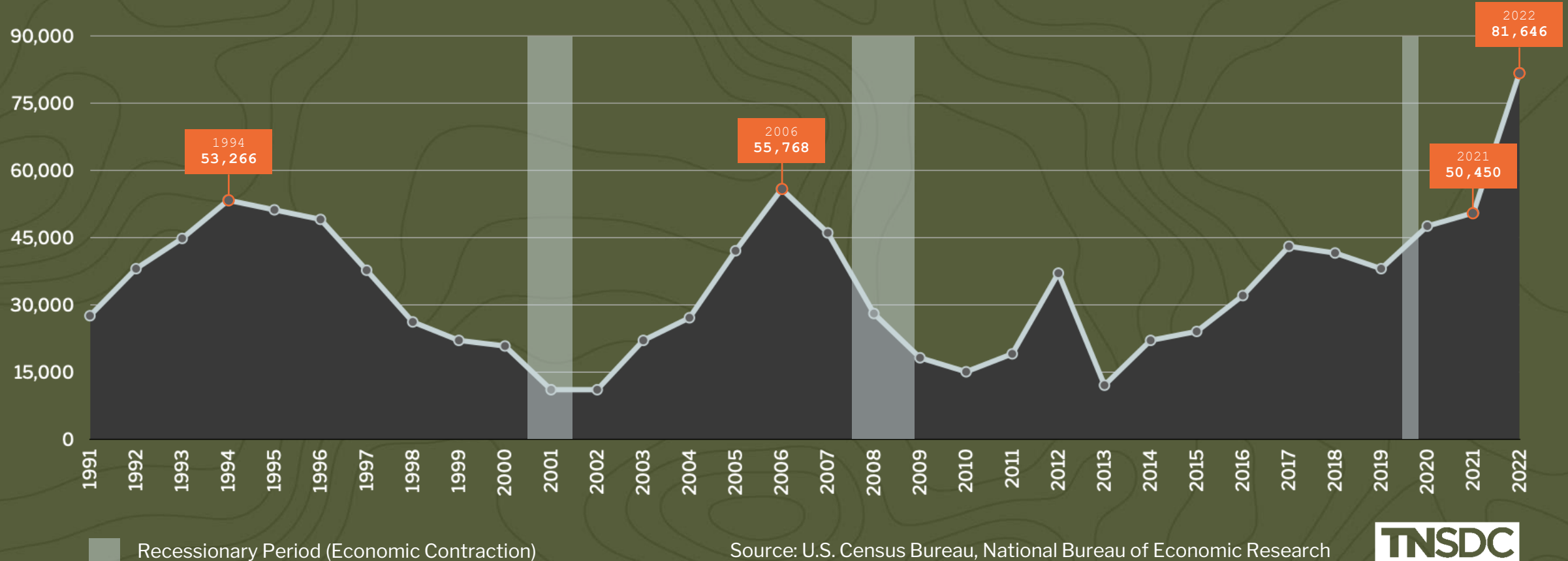


Figure 21. Topography



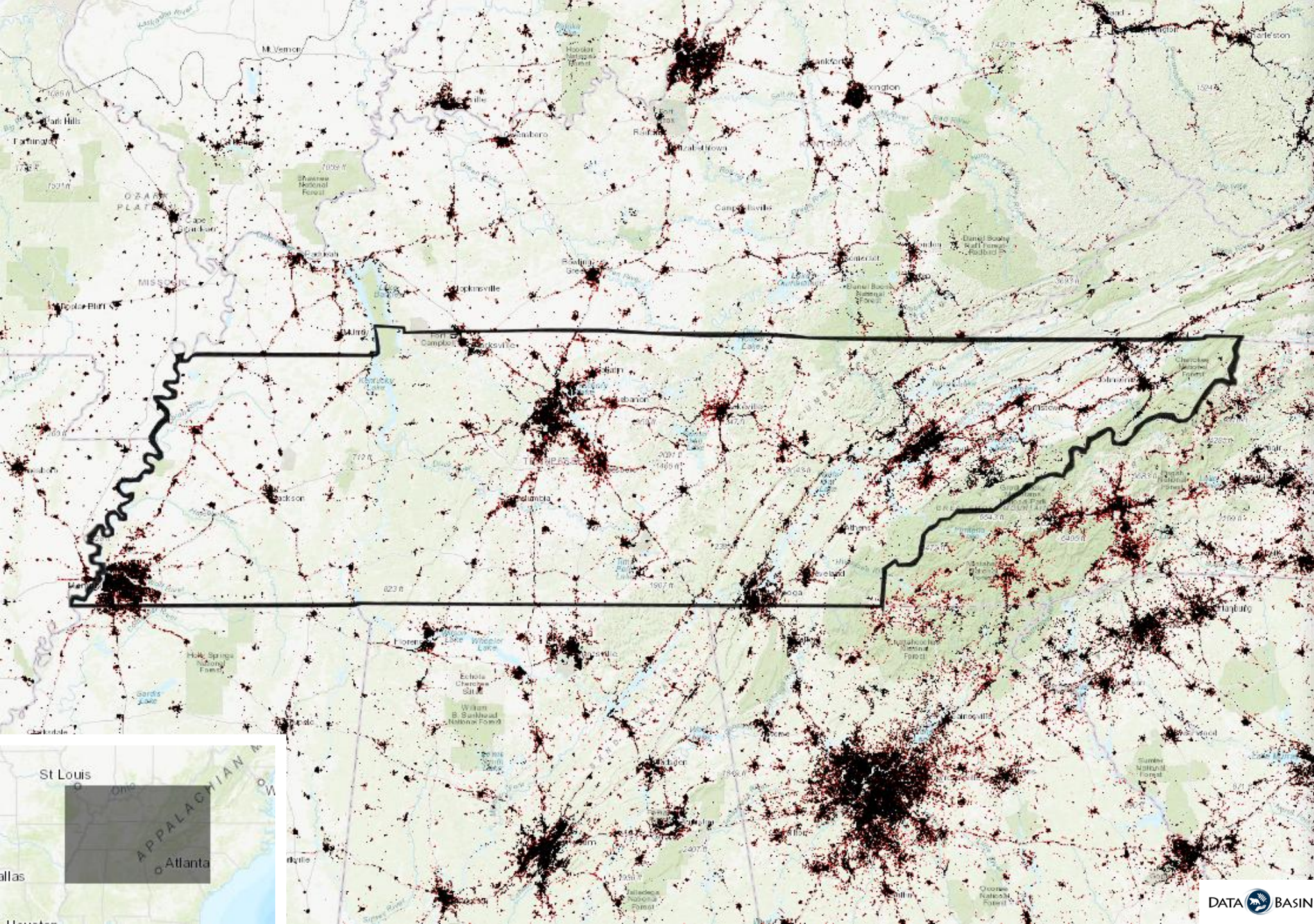
TENNESSEE POPULATION GROWTH

NET DOMESTIC MIGRATION



Source: U.S. Census Bureau, National Bureau of Economic Research

Urbanization in 2020



LEGEND

□ SLEUTH Boundary

Probability of Urbanization in 2100, 2020

- Urban
- <2.5
- 5
- 10
- 20
- 30
- 40
- 50
- 60
- 70
- 80
- 90
- 95
- 97.5
- >97.5



Urbanization in 2100



LEGEND

□ SLEUTH Boundary

Probability of Urbanization in 2100, 2020



Figure 4. Population Change - Block Group (2013-2022)

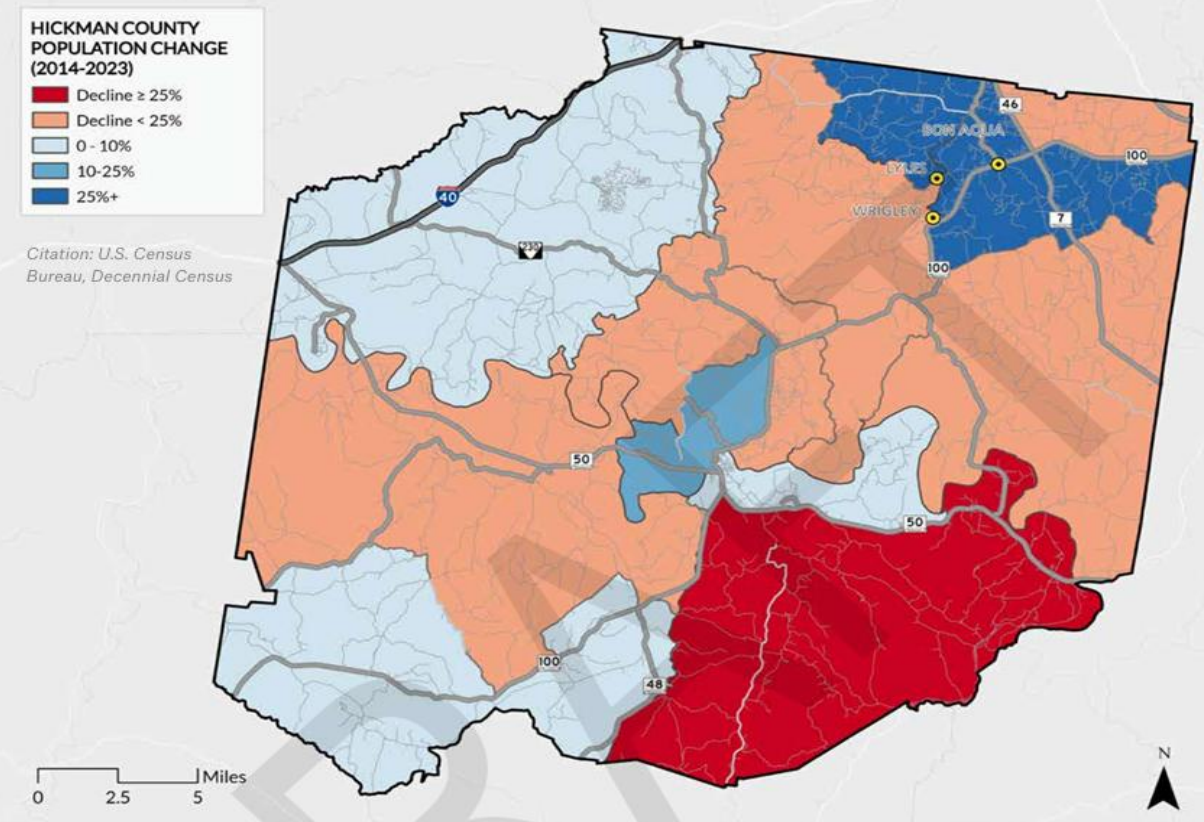
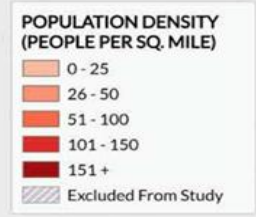
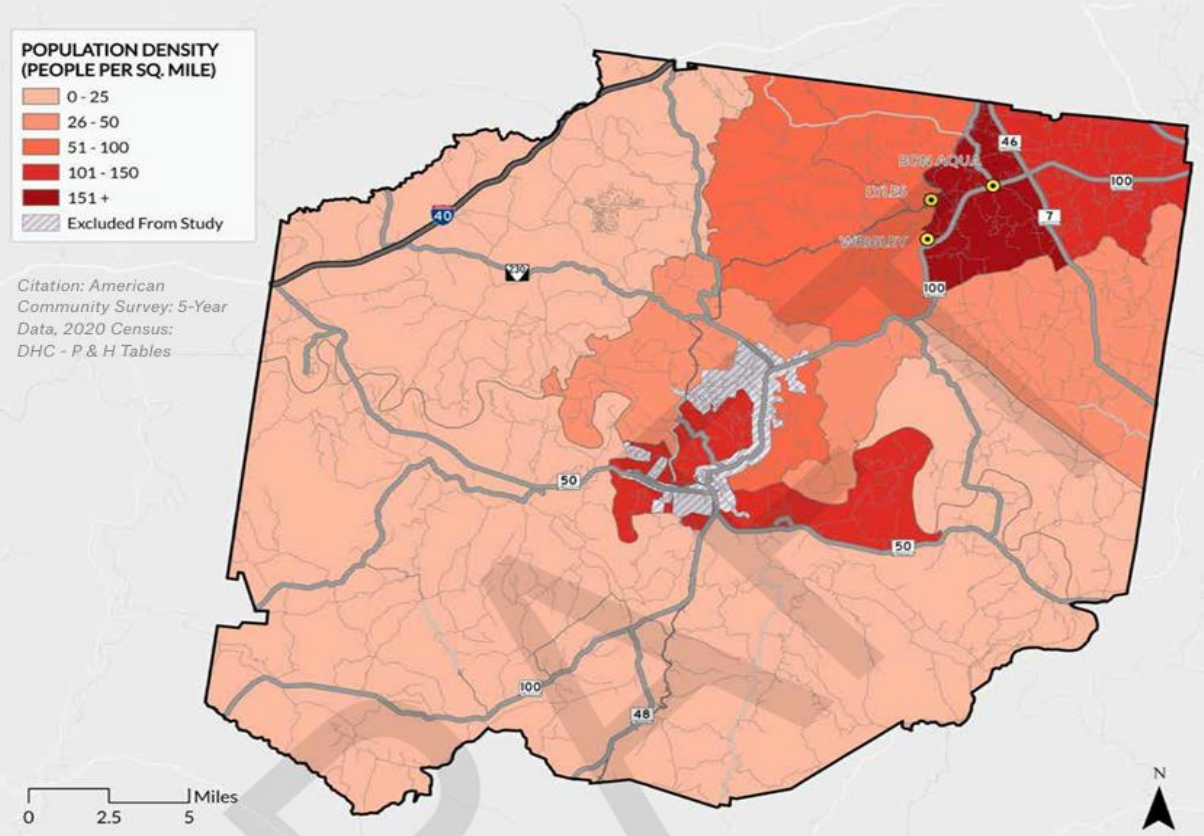


Figure 3. Population Density



Citation: American
Community Survey: 5-Year
Data, 2020 Census:
DHC - P & H Tables



Questions & Answers

April – August 2026

Natural Resource Asset Assessment Task Force:

Community Leaders

Partners

Experts

DELIVERABLE: Natural Resource Conservation Assessment Strategy



April – August 2026

Hickman County JECDB

Rural Economic Development Asset Assessment:

Manufacturing

Commercial

Residential

Agriculture

Forestry

Tourism

Outdoor Economy

Entrepreneur and Small Business Development

Questions & Answers

Deliverable: Rural Economic Development Assessment Strategy



Hickman Leaders Perspectives

How?

“Create Solid Information to Make Sound Decisions for Hickman County’s Future”

“Engage and Inform the Right Mix of Hickman County Leaders”

“Organize Ourselves for Proactive Decisions and Implementation”

Wrap Up and Next Steps:

Keith Nash, Hickman County Commissioner



**TENNESSEE
WILDLIFE
FEDERATION**

We Can Provide Implementation Support:

**Natural Resource Conservation Expertise
Rural Economic Development Resources
Technical Assistance
Incentives**



**TENNESSEE
WILDLIFE
FEDERATION**